

# AFM3001 Gas Flow Sensor



## 1. Product Summary

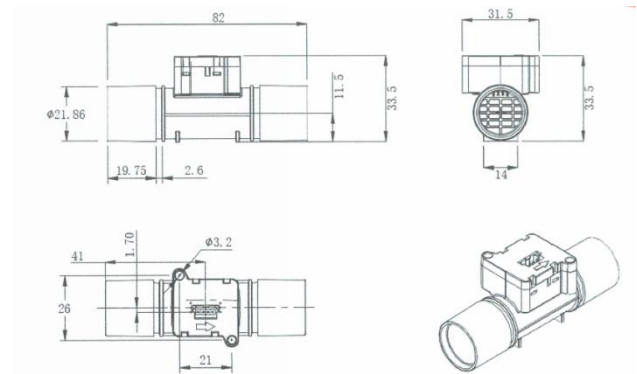
AFM3001 measures mass flow of air, oxygen and other non-corrosive gases with high accuracy. A self-developed thermal sensor chip and a high-performance CMOS microprocessor integrated with 24-bit AD acquisition are adopted in AFM3001. The special air duct of AFM3001 reduces the pressure loss of the measured gas, which makes it suitable for various harsh scenarios.

AFM3001 can measure bidirectionally and also measure the temperature and humidity of the gas.

## 2. Key Features

- ◆ Low pressure loss
- ◆ Bidirection measurement
- ◆ Measurement range: -200~+200slm
- ◆ Fully calibrated and temperature compensated
- ◆ Fast response time
- ◆ Small zero point drift
- ◆ Measure mass flow as well as temperature and humidity

## 3. Dimension



Unit: mm

## 4. Technical Parameters

Working voltage	4.75~5.25V
Working current	<45mA
Measurement range	-200~200slm
Accuracy	±(1.5% Readings)
Power supply	37.5mW@5V
Communication mode	I <sup>2</sup> C

## 5. Applications

AFM3001 is designed specially for ventilatorss. Besides it can be widely used in environmental monitoring systems, fuel control systems, fuel cell control systems and other scenarios.



**Guangzhou Aosong Electronic Co., Ltd.**

Add: No.17, Yunjun Road, Huangpu District, Guangzhou, China

Tel: +86 18122702030 Fax: +86 20-89852796

Email: inquiry@aosong.com

Web: www.aosong.com/en, www.asairsensors.com